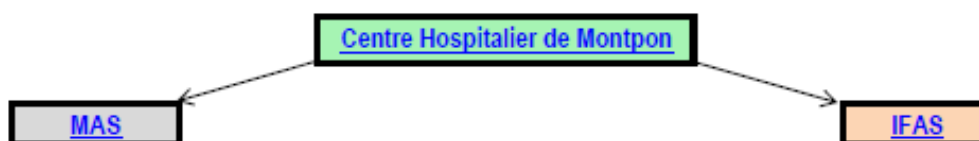




CHIFFRES CLES 2017

Présentation

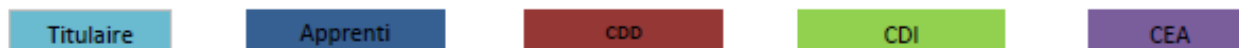
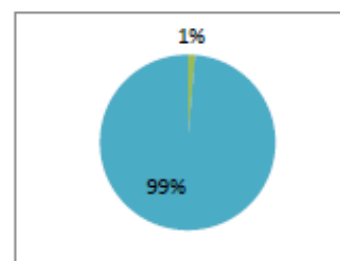
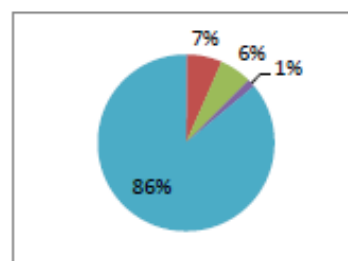
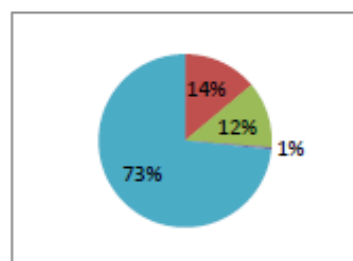
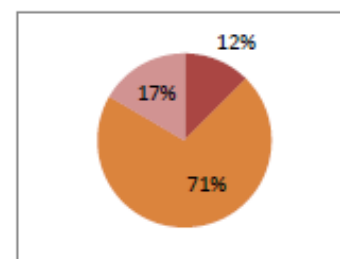
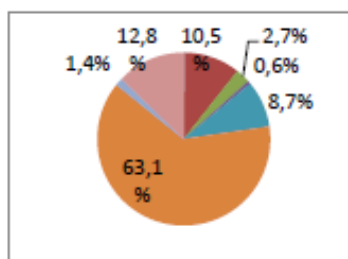
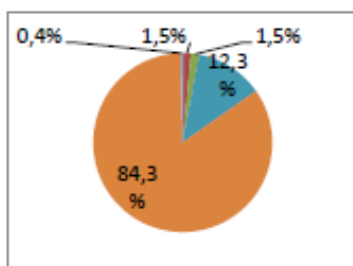


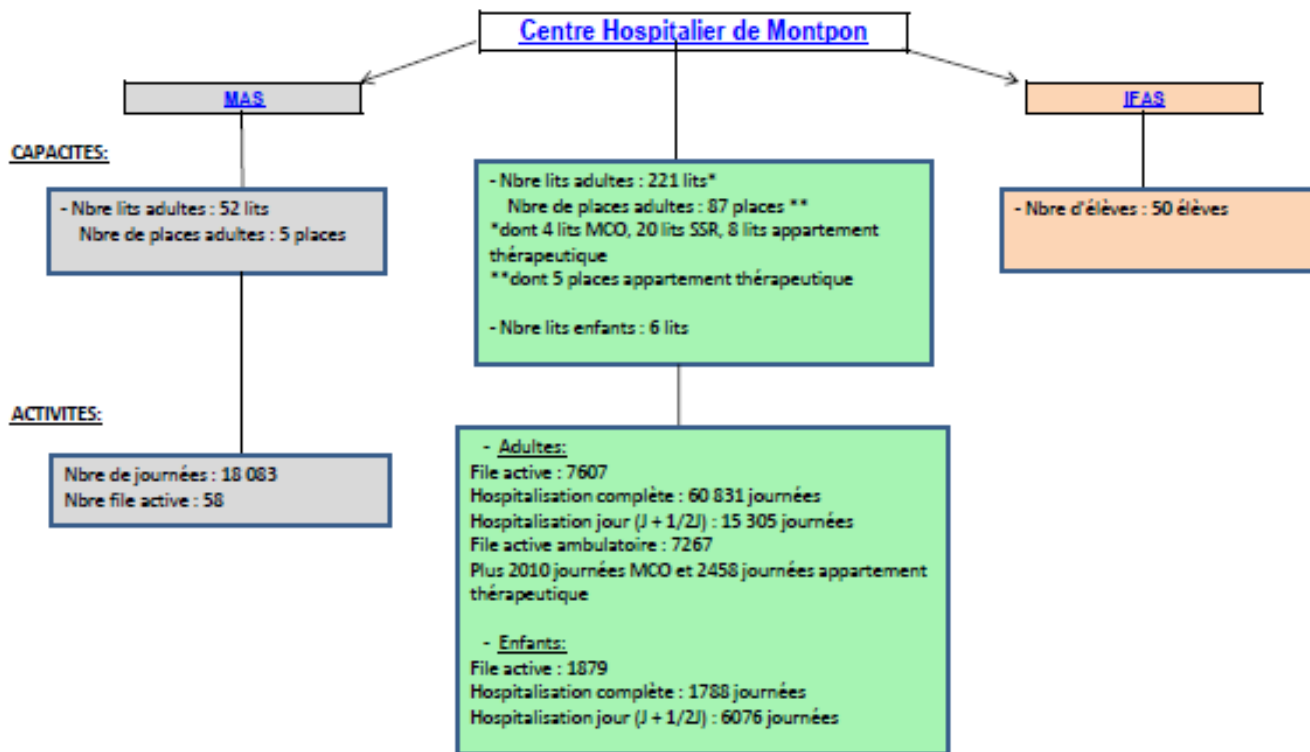
DONNES FINANCIERES:

Dépenses exploitation	4 452 607 €	44 583 270 €	264 591 €
Dépenses investissement		1 904 758 €	
Recettes exploitation	4 473 256 €	44 632 509 €	276 738 €
Recettes investissement		2 971 €	

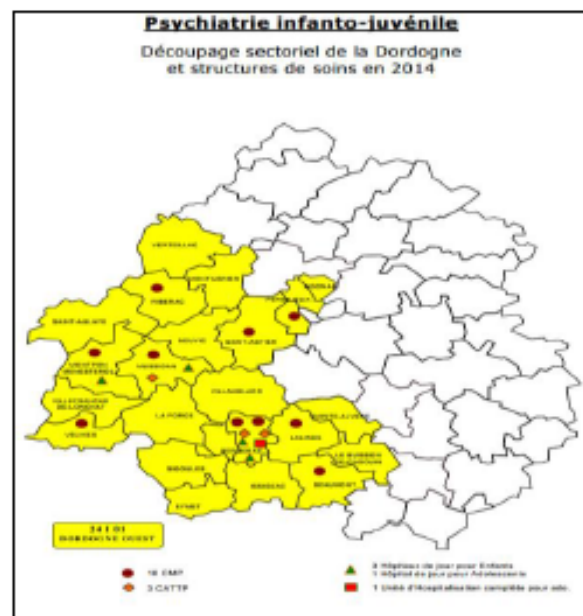
EFFECTIFS REMUNERES:

Personnel médicales	0,4	33,15	
Pers non-médicales	67,13	691,61	4,23





COUVERTURE MEDICALE



DIVERS MAIS AUSSI

Nombre dossiers créés

Nombre ligne de dispensation

Nombre de résumé PMSI

Linge traité : 329 310 tonnes

Nombre de repas: 260 320 repas

Kilométrage véhicule : 951 886 Km